

Figure 3.30. Chromatogram of amlodipine, glimepiride, and atorvastatin assayed in 5% decrease of ACN in plasma

When samples were exposed to sunlight for four hours and then analyzed, two small peaks were detected at 9.357 and 11.623 min (Fig. 3.31). These two small peaks are indicative of amlodipine degradation since it is light sensitive drug.

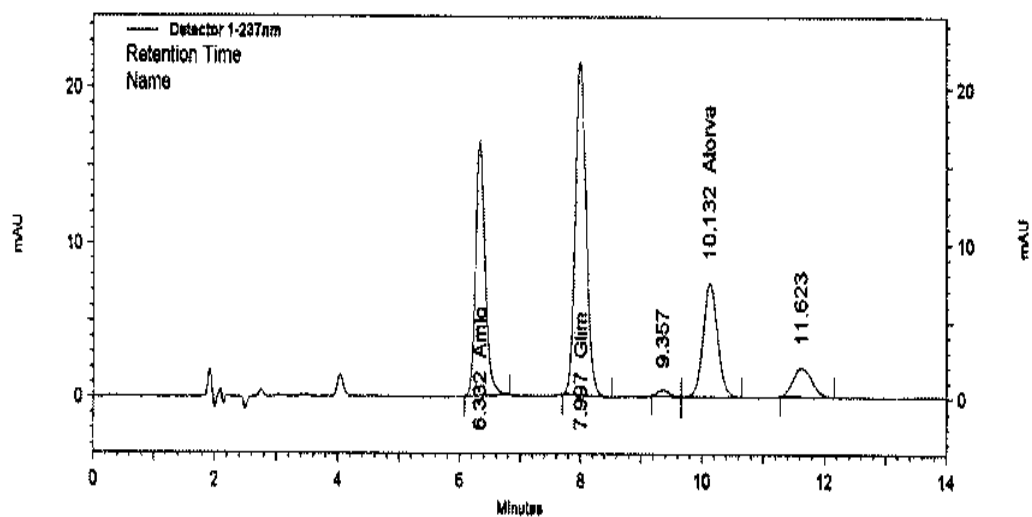


Figure 3.31. Chromatogram of amlodipine, glimepiride, and atorvastatin following 4 hours of sunlight exposure.